

Tankersley & Pilley Environmental Group (TPEG)

Tankersley Parish Council annual meeting 2023



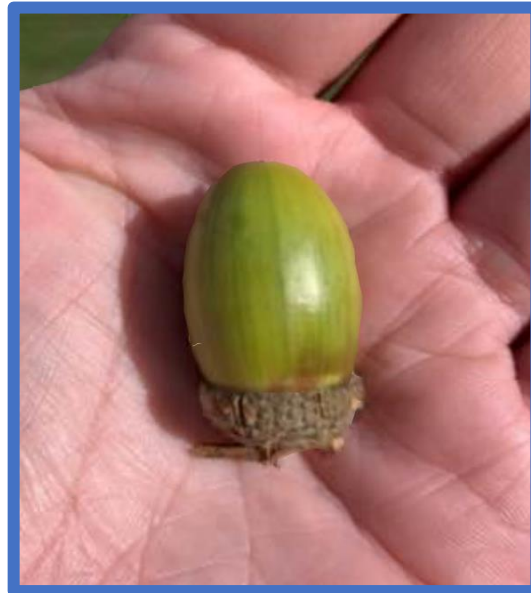
Presented by: James Walker TPEG Chair

TPEG aims - objectives

- TPEG is a loose collective of local volunteers who have a common aim to improve our local environment, the group formed about 14 years ago
- TPEG is a “Coalition of the willing” to keep our local area a great place to live, work and play.
- TPEG support volunteers of all ages and abilities whenever they want to make a positive impact on our local environment
- TPEGs aim is to improve and maintain the physical environment of Tankersley Parish
- Objectives: in order to meet the aim, TPEG will plant bulbs, trees and shrubs undertake simple maintenance of woodland, footpaths and other areas clear litter and encourage others to not litter
:
- TPEG will consult and work in partnership with the following statutory and informal bodies:
 - Barnsley Metropolitan Borough Council
 - Tankersley Parish Council
 - Friends of Broad Ings
 - Local businesses – Distinction Doors, Company Shop, Rouse, HSBC, McDonalds
 - Twiggs, as a key BMBC contractor for environmental projects
 - Other local and voluntary organisations as appropriate: Penistone Ward Alliance, TCA
 - Membership is open to all residents of Tankersley Parish

1) TPEG background - History

- TPEG was founded in 2003 by a small group of people from Tankersley & Pilley who were interested in improving the physical environment of the Parish.
- Supported by the Parish Council, Barnsley MBC, charities and individuals, early work included the planting of over 13,000 bulbs (see for instance the snowdrops and crocuses at the top of Pilley Green and the daffodils on Pilley Lane)
- Maintaining the Parish Community woodland 'Broad Ings'
- Plus the erection of the village stones and six benches in various parts of the Parish.
- In parallel with this was the continuing improvement of numerous footpaths by cutting back overhanging vegetation and intruding nettles and brambles.
- TPEG volunteers planted new woodlands around the village. Once the trees had matured, a vast number of tree collars were removed to allow them to thrive.



Projects



Maintaining Potter Holes



Maintaining Broad Ings



Clearing footpaths to improve people's Mental Health



Projects – Monthly litter picks



TPEG run monthly litter picks with between 60 & 100 volunteers a year, young, & not so young. Alternate months mid-week, & at weekends





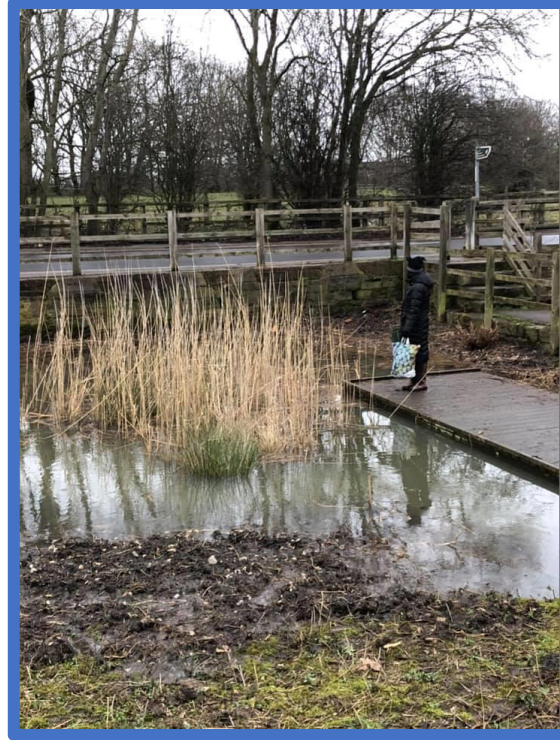
TPEG are developing projects with St Peters School, building on the work David Crossley started.



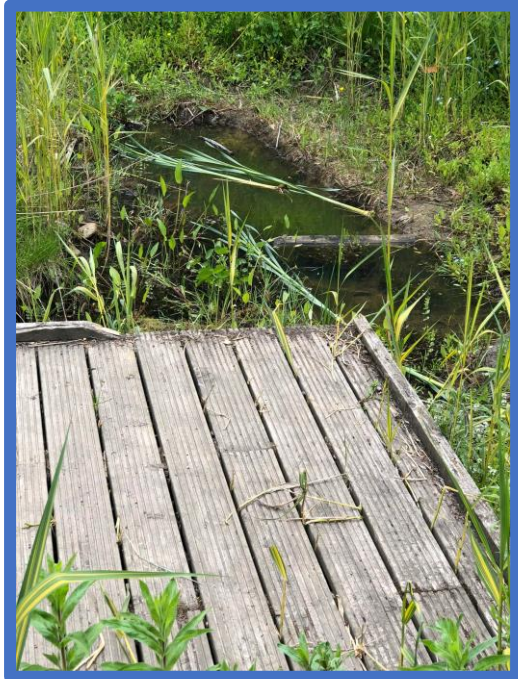
Projects - Environmental



The Dipping Pond, a site of environmental interest, had fallen into disrepair. Volunteers coppiced the spinney & dug the pond out to improve the habitat



Building bug hotels



Thanks to our awesome volunteers



3) Projects



Pilley Lane
Making the
bench
accessible



Clearing the bus
stop & Parish notice
board area



Cleaning up the
village signs &
repainting them

Projects

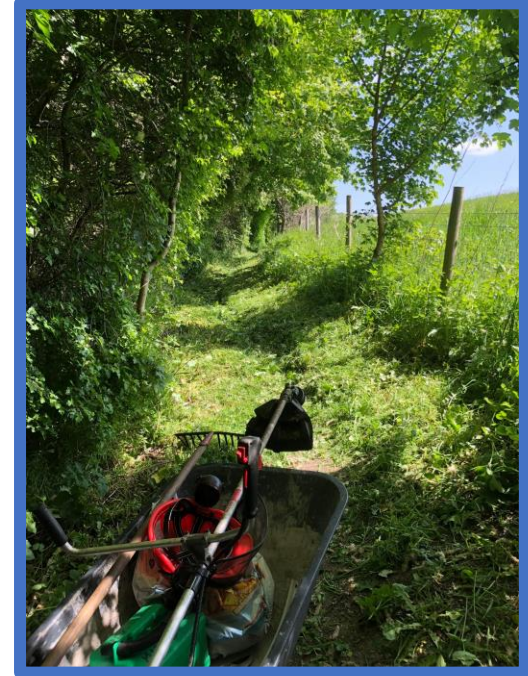
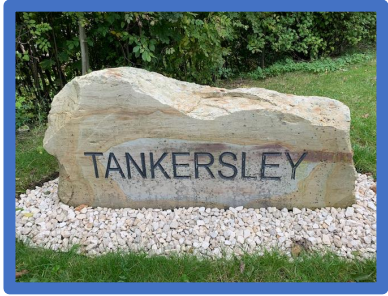


Thorncliffe Estate project

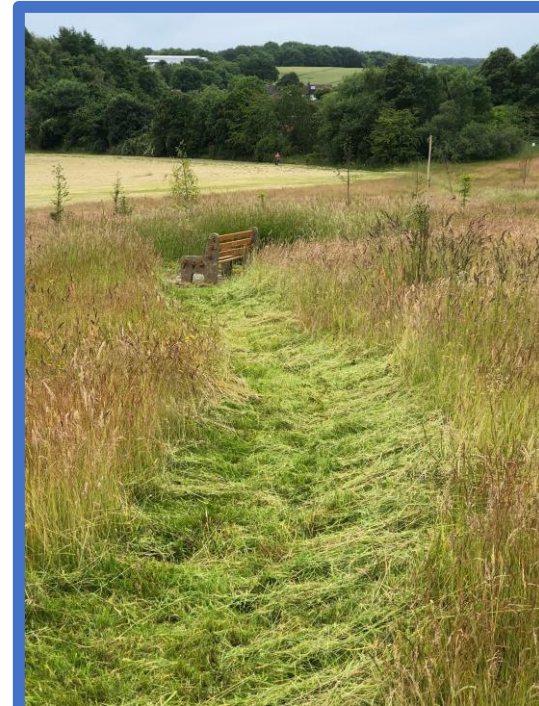


An ongoing project,
thanks to Kate & team

Projects



Clearing paths - Before



Clearing paths - After

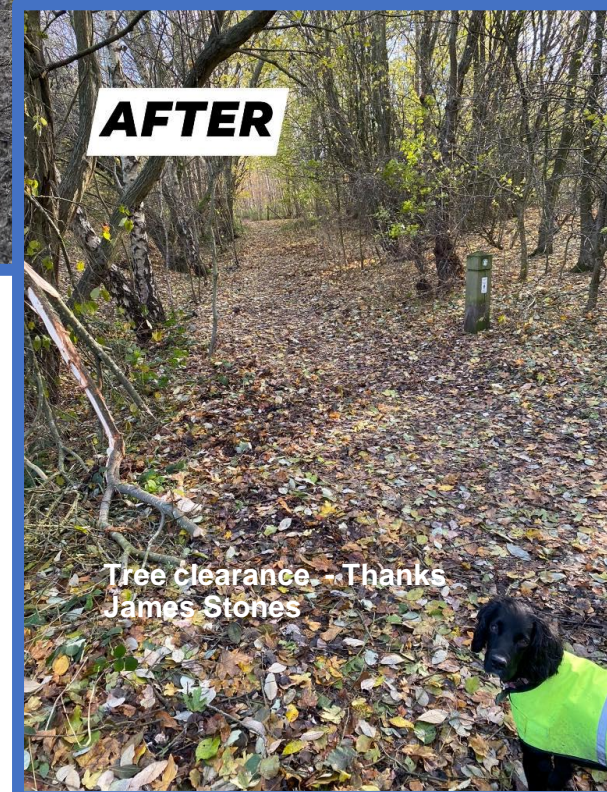


Projects

Tree clearance to keep footpaths open

Before

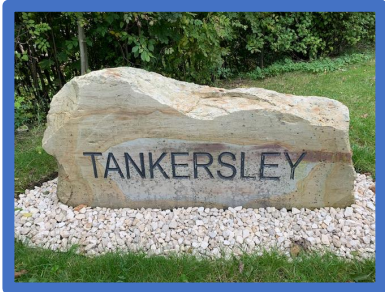
After



Partnership working with The Hub & Parish Council



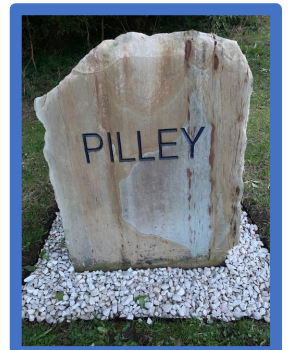
Recognition for TPEG



TPEG receive >£1,000 from the Ward Alliance for re-wilding, planting wild flower meadows around the village



TPEG volunteers receive recognition from BMBC



Ongoing projects



The Dipping pond



<https://www.facebook.com/reel/64905372056931>



Historical & ongoing projects

Renovating the bench & sign



Coppicing



Partnerships

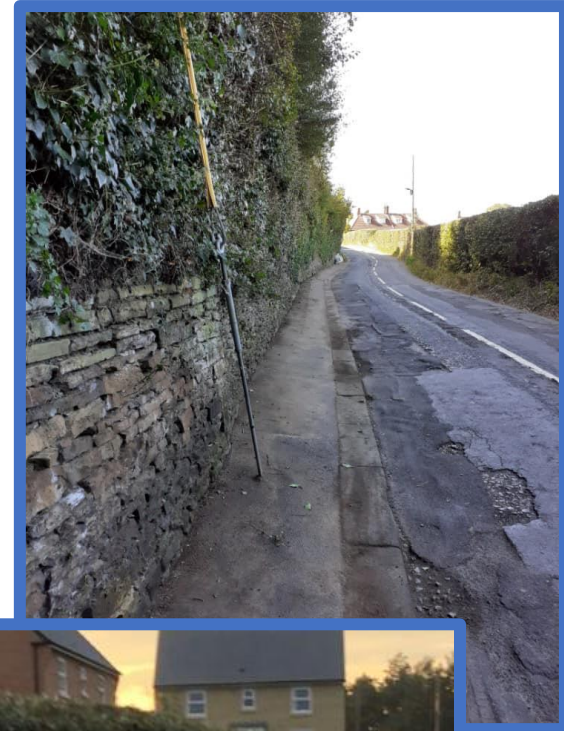
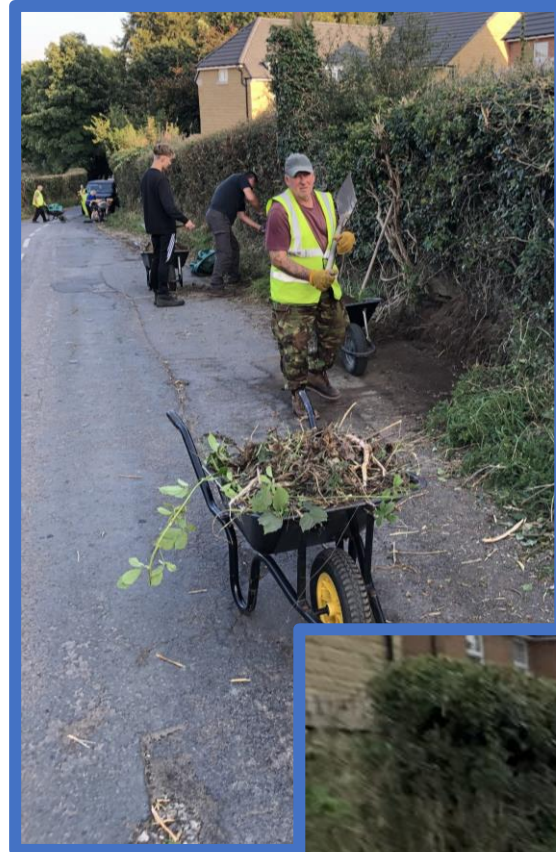
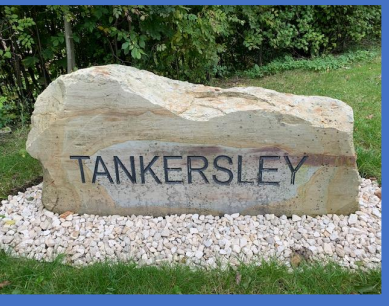
With local voluntary groups

With local businesses



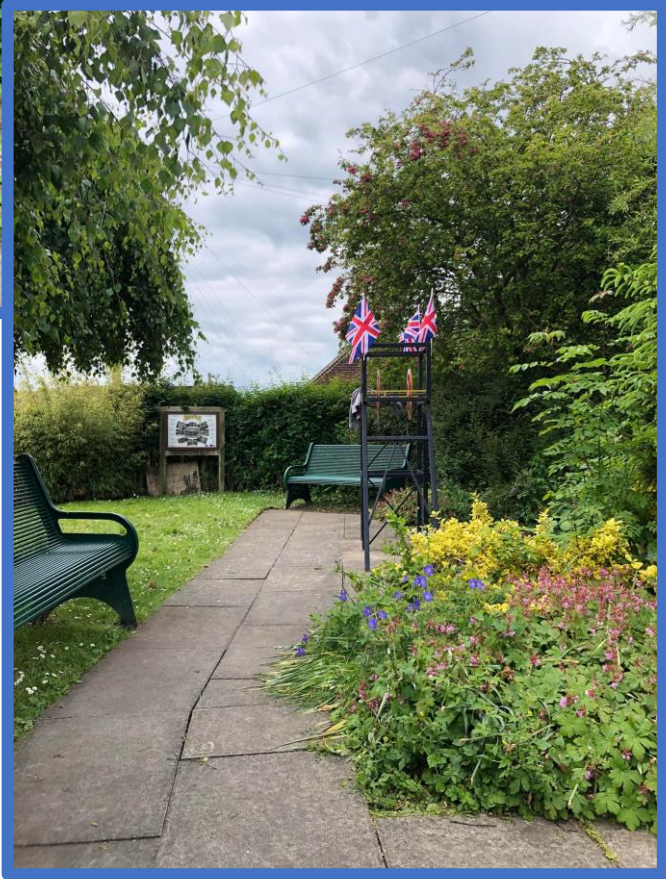
The Hub car park

Historical & ongoing projects



Lidgett Lane

TPEG & TPC joint project involving up to 50 volunteers aged from 9 to 76 years of age. Uncovering footpaths not seen for 40 years, Making it safe to walk to school/work



Questions

